

Castle Point & Rochford CCG – Equality Workforce Information

Andrew Stewart, Head of Recruitment and Workforce

Ben Oxford, Workforce Analyst

Paul Mason, Workforce Transformation Lead



Equality workforce information

Castle Point & Rochford CCG

This document provides Castle Point & Rochford CCG equality workforce composition under the nine protected characteristics*. Data for this report was based on information obtained from the Electronic Staff Record (ESR) as of 12 December 2013.

Headcount – 32

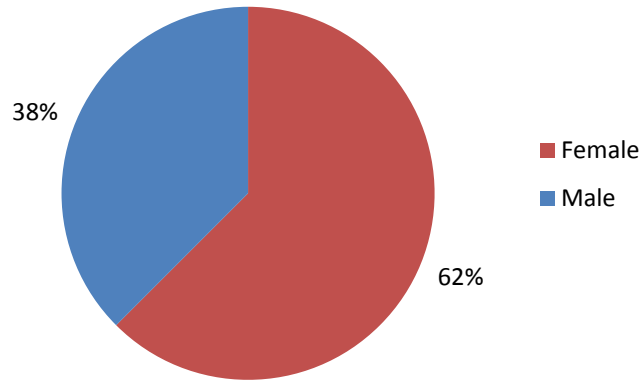
FTE – 23.23

*ESR is not currently able to hold information on Gender Reassignment and is not currently reported.

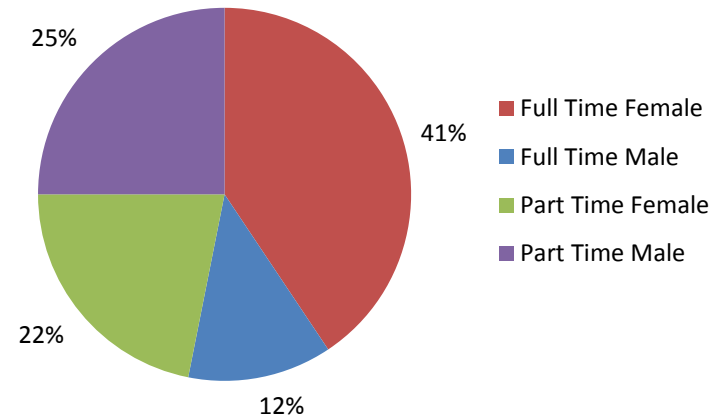


Gender and Maternity Adoption status

Gender (%) - Headcount



Part time (%) - Gender



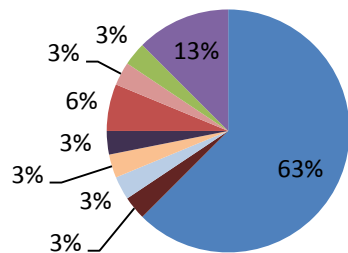
Pay Band Split (%) - Gender

Pay Band	Female	Male	Grand Total
Non AfC	6.25%	28.13%	34.38%
Band 4	9.38%	6.25%	15.63%
Band 5	12.50%	0.00%	12.50%
Band 8D	9.38%	0.00%	9.38%
Band 8B	6.25%	0.00%	6.25%
Band 6	6.25%	0.00%	6.25%
Band 7	6.25%	0.00%	6.25%
Band 8A	3.13%	3.13%	6.25%
Band 9	3.13%	0.00%	3.13%
Grand Total	62.50%	37.50%	100.00%



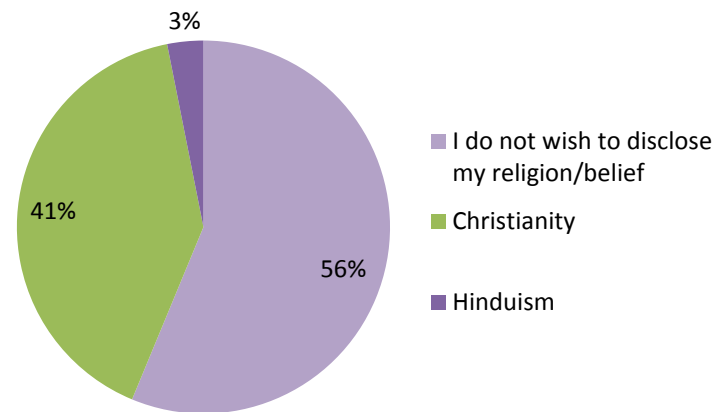
Ethnic Origin and Religion/Belief

Ethnic Origin (%) - Headcount



- A White - British
- CA White English
- G Mixed - Any other mixed background
- LH Asian British
- Z Not Stated
- B White - Irish
- CB White Scottish
- H Asian or Asian British - Indian
- N Black or Black British - African

Religion (%) - Headcount

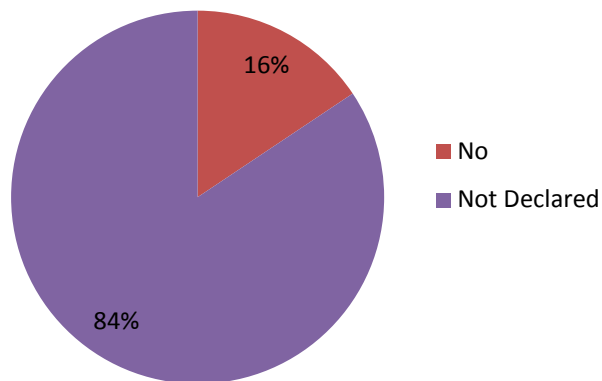


Pay Band	A White - British	B White - Irish	CA White English	CB White Scottish	G Mixed - Any other mixed background	H Asian or Asian British - Indian	LH Asian British	N Black or Black British - African	Z Not Stated	Grand Total
Non AfC	9.38%	3.13%	0.00%	0.00%	3.13%	6.25%	3.13%	0.00%	9.38%	34.38%
Band 4	12.50%	0.00%	0.00%	0.00%	0.00%	0.00%	0.00%	0.00%	3.13%	15.63%
Band 5	12.50%	0.00%	0.00%	0.00%	0.00%	0.00%	0.00%	0.00%	0.00%	12.50%
Band 8D	6.25%	0.00%	3.13%	0.00%	0.00%	0.00%	0.00%	0.00%	0.00%	9.38%
Band 8B	6.25%	0.00%	0.00%	0.00%	0.00%	0.00%	0.00%	0.00%	0.00%	6.25%
Band 6	6.25%	0.00%	0.00%	0.00%	0.00%	0.00%	0.00%	0.00%	0.00%	6.25%
Band 7	3.13%	0.00%	0.00%	0.00%	0.00%	0.00%	0.00%	3.13%	0.00%	6.25%
Band 8A	6.25%	0.00%	0.00%	0.00%	0.00%	0.00%	0.00%	0.00%	0.00%	6.25%
Band 9	0.00%	0.00%	0.00%	3.13%	0.00%	0.00%	0.00%	0.00%	0.00%	3.13%
Grand Total	62.50%	3.13%	3.13%	3.13%	3.13%	6.25%	3.13%	3.13%	12.50%	100.00%

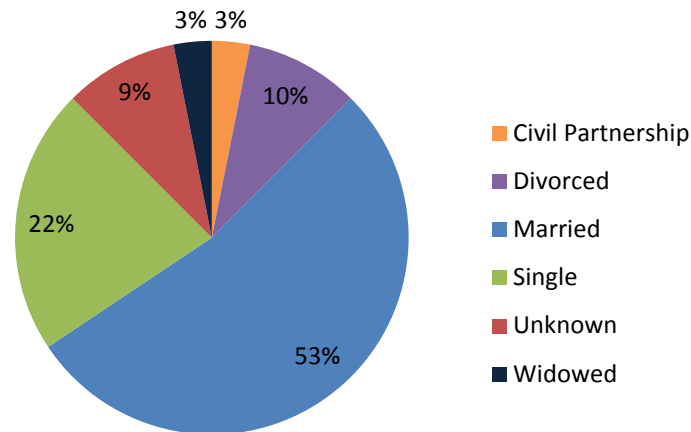


Disability, Marital, Age and Maternity & Adoption status

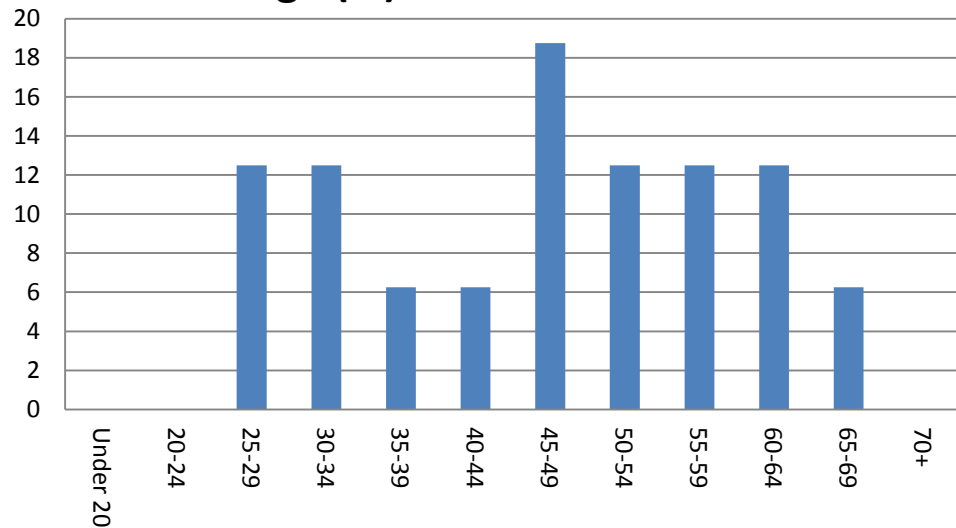
Disability (%) - Headcount



Marital Status (%) - Headcount



Age (%) - Headcount



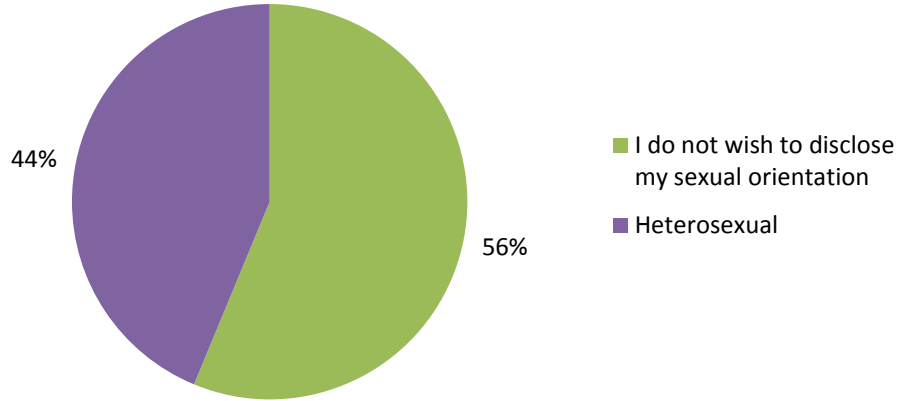
**There are no staff currently on
Maternity / Paternity / Adoption
Leave**



Sexual Orientation, Marital, Age and Maternity & Adoption status

Sexual Orientation (%) - Headcount

ESR does not capture data on Transgender



Equality application information

Castle Point & Rochford CCG

This document provides Castle Point & Rochford CCG equality application composition under the nine protected characteristics*. Data for this report was based on information obtained from NHS Jobs System as of December 2013.

Applications – 386

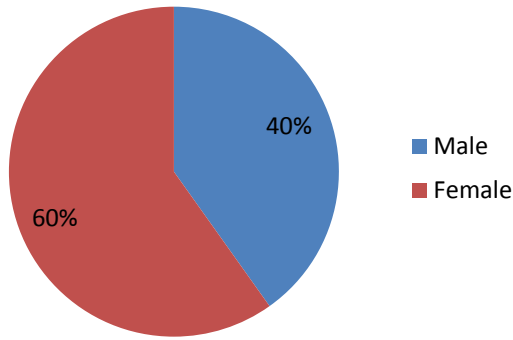
Vacancies - 16

*NHS Jobs is not currently able to report information on Marital status, Maternity, Paternity, Adoption or Gender Reassignment.

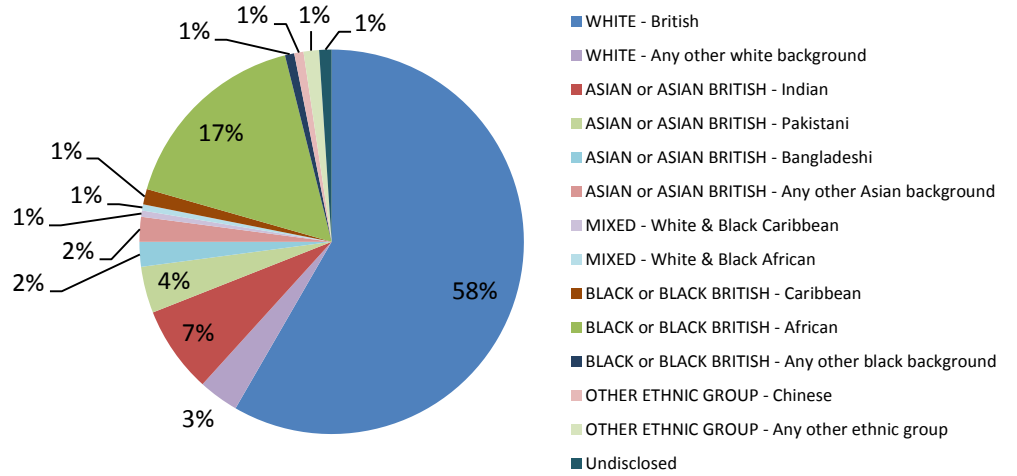


Gender, Ethnic Origin, Religion and Disability status

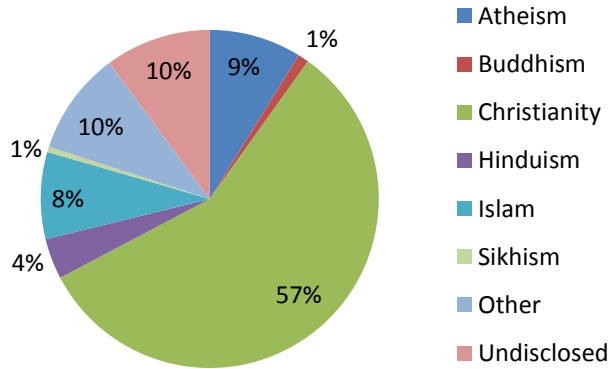
Gender (%) - Applications



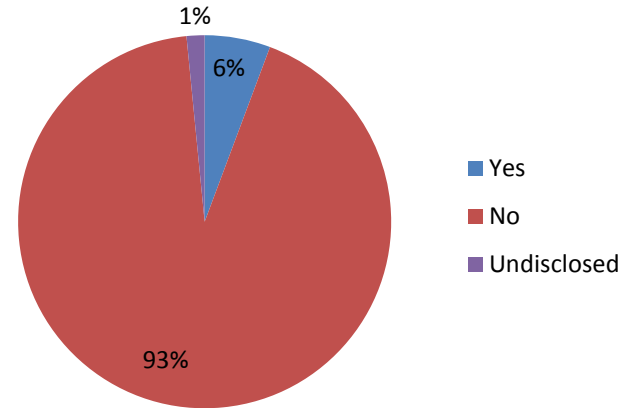
Ethnic Origin (%) - Applications



Religion (%) - Applications

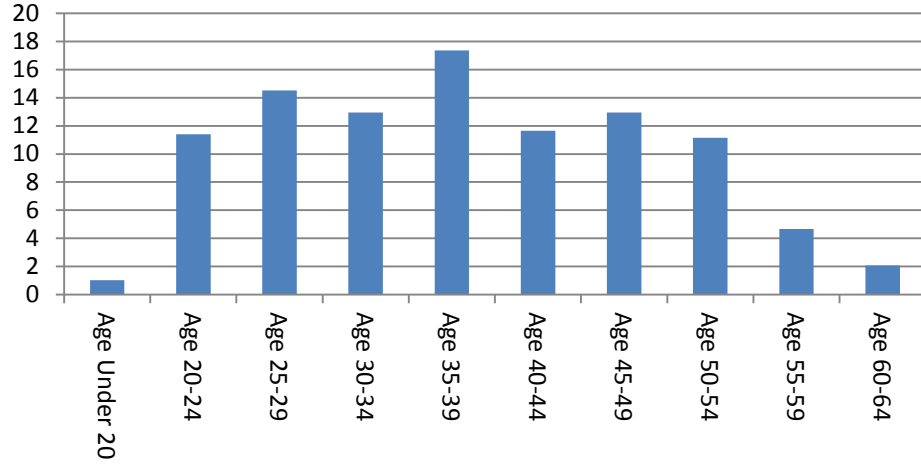


Disability Status (%) - Applications

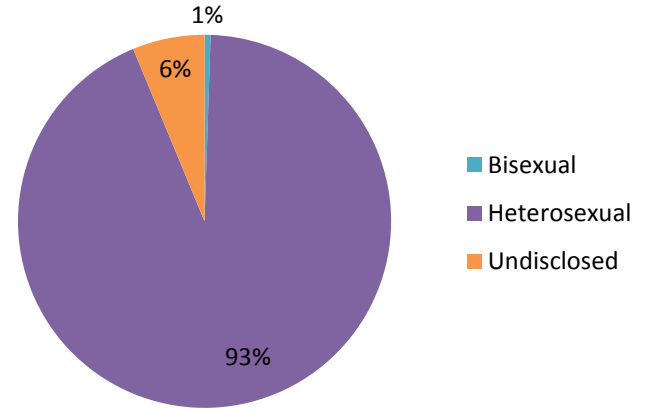


Age and Sexual Orientation

Age (%) - Applications



Sexual Orientation (%) - Applications



New Starter Equality information

Castle Point & Rochford CCG

This document provides Castle Point & Rochford CCG new starter equality composition under the nine protected characteristics*. Data for this report was based on information obtained from ESR as of December 2013.

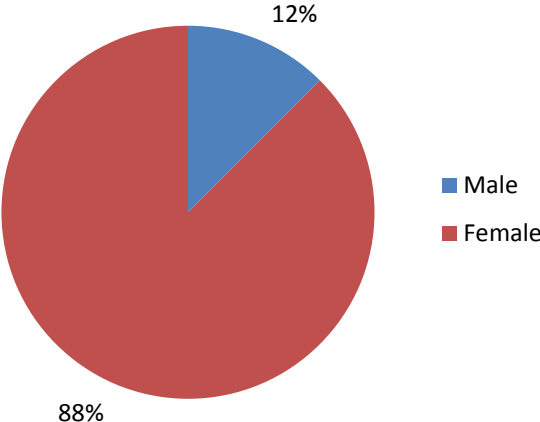
New starters – 8

*ESR is not currently able to report information on Gender Reassignment. This data is exclusive of any TUPE transfers.

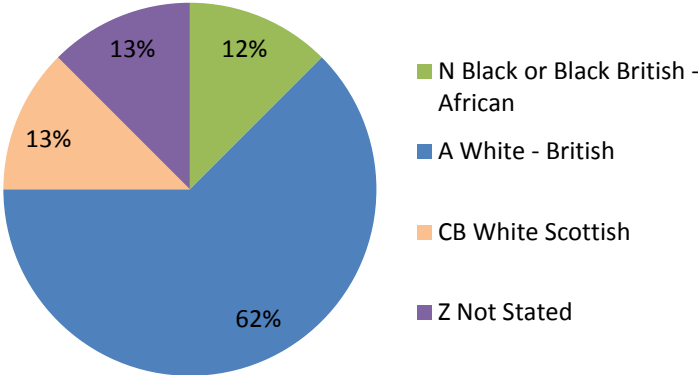


Gender, Ethnic Origin, Religion and Disability status

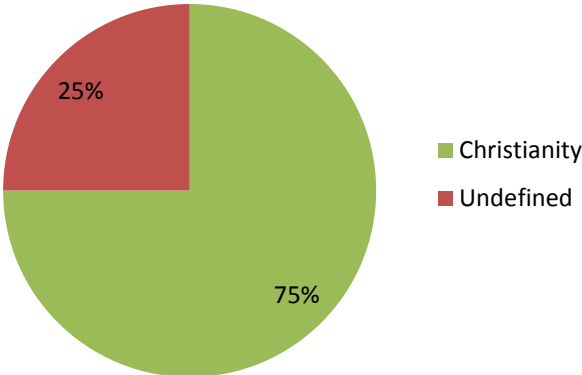
Gender (%) - New Starters



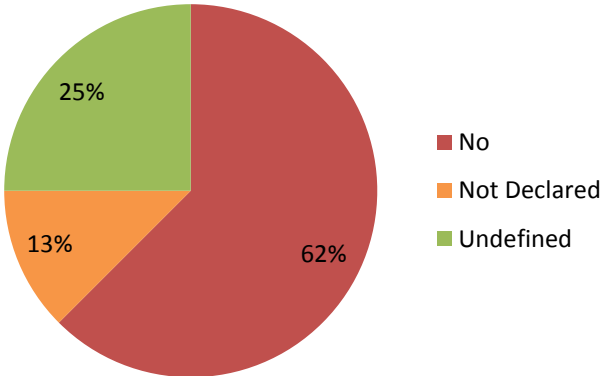
Ethnic Origin (%) - New Starters



Religion (%) - New Starters

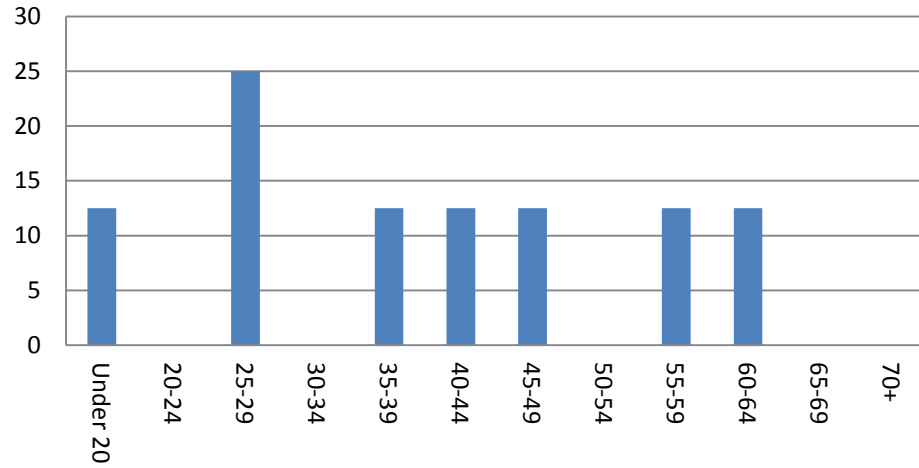


Disability (%) - New Starters



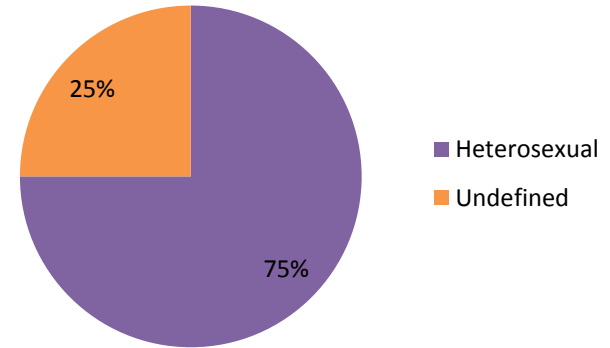
Age & Sexual Orientation

Age (%) - New Starters



Sexual Orientation (%) - New Starters

ESR does not capture data on Transgender



Marital Status (%) - New Starters

